

PART DIAGRAM

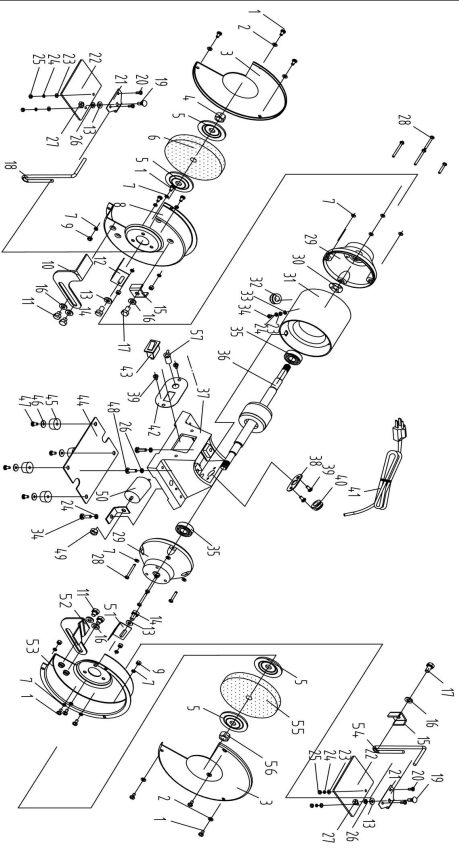
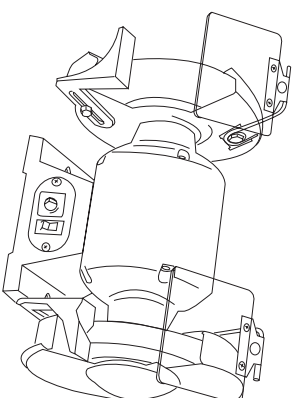


Figure 6

No.	Description	Qty	No.	Description	Qty
1	Phillips screw M5x10	12	30	Wave washer D40	1
2	Flat washer D5	6	31	Stator	1
3	Wheel Cover	2	32	Cord bushing	1
4	Hex nut type I M16 Left	1	33	Star washer D4	1
5	Wheel Clamp	4	34	Phillips screw M4x8	2
6	Grinding wheel	4	35	Ball bearing 180203	2
7	P 8" x 1" 5/8" 120#	1	36	Rotor	1
8	Spring Washer D5	20	37	Base	1
9	Left safe guard plate	1	38	Cord Plate	1
10	Hex nut type I M5	6	39	Phillips screw M5x8	4
11	Left tool rest	1	40	Cord Clip	1
12	Hex Bolt M8x8	4	41	Cord & plug	1
13	Left Spark Breaker	1	42	Switch plate	1
14	Flat washer D6	4	43	Switch	1
15	Hex Bolt M6x6	2	44	Base plate	1
16	Bracket	2	45	Rubber foot	4
17	Flat washer D8	6	46	Big flat washer D5	4
18	Hex bolt M8x14	2	47	Phillips screw M5x16	4
19	Left eyeshield mounting rod	1	48	Phillips screw M6x20	2
20	Dome screw M6x16	2	49	Hex nut type M	1
21	Phillips screw M4x10	4	50	Capacitor	1
22	Eyeshield Plate	2	51	Right spark breaker	1
23	Eyeshield	2	52	Right spark rest	1
24	Flat washer 4	5	53	Right safe guard plate	1
25	Spring Washer D4	6	54	Right eyeshield mounting rod	1
26	Hex nut M4	4	55	Grinding wheel	1
27	Spring Washer D6	4		P 8" x 1" 5/8" 60#	1
28	Hex nut type I M6	2	56	Hex nut type M16	1
29	Phillips screw M5x20	8	57	Rotation Switch	1
	End Bell	2			

GRIND2X

2-Speed 8" Bench Grinder



Operator's Manual

WARRANTY

This product is warranted against defects in materials and workmanship for a period of two (2) years from the date of purchase. The warranty applies to the original purchaser of the product and is limited to the repair or replacement of the product or its parts at the discretion of PSI Woodworking Products. Excluded are parts which have been misused, abused, altered, or consumed by the normal operation of the machine, also excluded are any direct or or consequential damages to persons, property, or materials. Your invoice serves as proof of purchase and must be referenced to authorize any warranty repairs. Call your dealer for proper authorization. Owner is responsible for returning merchandise at their own expense. Defective parts will be repaired or replaced at the manufacturer's discretion.

GRINDER SAFETY RULES

1. Always use guards and eye shields. Always wear safety glasses or eye protection when operating this tool and keep the eye shields mounted in their proper position on the wheel guard.
2. Replace a cracked wheel immediately. Handle wheels carefully to avoid bumping or dropping. **DO NOT** use a grinding wheel that has been dropped. Before use, inspect each wheel for cracks or flaws. If cracks are evident, discard the wheel.
3. Before mounting a new wheel, be sure that it is marked with a RPM, that is the same as, or higher than the no load speed of the grinder as marked on the nameplate.
4. Never start a grinder with anyone, including the operator, standing in line with the wheel. After installing a replacement wheel, stand to one side and allow it to run for about one minute.
5. Do not grind on the sides of grinding wheels unless they are the special wheels designed specifically for this purpose.
6. Do not over tighten wheel nut.
7. Use only flanges furnished with this grinder.
8. **CHECK DAMAGED PARTS.** Before further use of the tool, a guard of other part that is damaged should be carefully checked to assure that it will operate properly and perform its intended function; check for alignment of moving parts, binding of moving parts, breakage of parts, mounting, and any other conditions that may affect its operation. A guard of other part that is damaged should be properly repaired or replaced.
9. Bolt bench grinder to a bench of pedestal to prevent movement.
10. Use any accessory only in the proper and intended manner.

WARNING

Turn grinder **OFF** and wait until rotation has stopped before changing speeds.
To assure that no damage has been done to this unit during shipment, move the grinding wheel manually before electrically running this unit.
If the grinding wheel does **NOT** spin freely, check this operation manual to make proper adjustments.

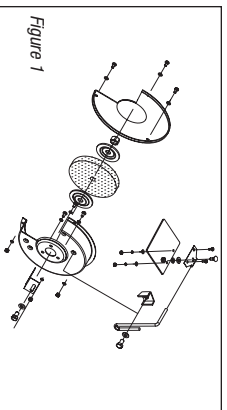


©2006 PSI Woodworking Products
Philadelphia, PA 19115

Manual: GRIND2XELV1

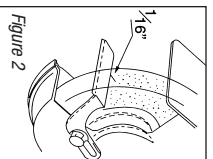
ASSEMBLY INSTRUCTIONS

ATTACHING EYE SHIELDS



The two eye shields are made of clear and shatterproof plastic, and are attached to the top of each wheel guard as shown in Figure 1. First, slide the sheet metal nut of the tang in the eye shield. Slide tang under top of wheel guard and fasten shield in place with a screw.

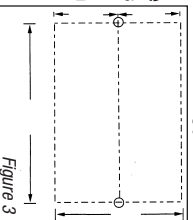
ATTACHING TOOL REST



The two tool rests are not interchangeable — one fits the left side of the grinder and one the right side. Be careful to assemble parts exactly as shown in Figure 1, and note that the star lock washer goes between the wheel guard and the inside of the tool rest. Tighten the wing nut firmly with a clearance of 1/16" between the grinding wheel and the tool rest. See Figure 2. Tool rests are adjustable for wheel wear. Keep them adjusted so that a clearance of 1/16" is continually maintained between the wheel and the tool rest as the wheel wears. This clearance is very important as it will prevent any loose piece of significant size from jamming between the wheel and the tool rest. Jamming could break the wheel, the tool rest or both.

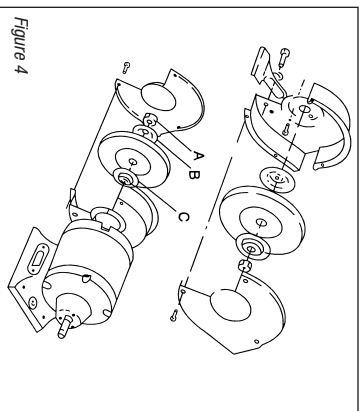
BENCH MOUNTING

Mounting the grinder on a bench is strongly recommended in order to prevent movement of the grinder when pressure is applied against a wheel. First, slide rubber feet on both sides and in the middle of the grinder base. Then drill 2 holes for 1/4" wood screws or bolts in the bench as shown in Figure 3. Use 1/4" wood screws or bolts, and tighten down only enough to partially compress rubber feet, (about 1/16"). The rubber feet will not be effective in absorbing vibration if fully compressed. When using 1/4" bolts, a second nut is required to lock against the first nut and keep grinder from loosening during operation. Never operate the grinder without the rubber feet attached to its base.



CHANGING WHEELS

Unplug power cord and be sure that switch stays in the "OFF" position.



1. Remove and cover — see Figure 4. Remove the screws in the wheel guard.

2. See Figure 4. Remove clamp nut "A" by turning it in the direction the wheel normally rotates. (The nut "A" shown, has a left-hand thread. The silver-colored nut at the other end of the grinder has a right-hand thread.)

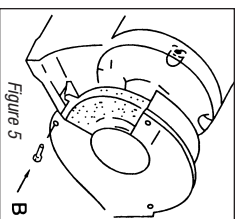
3. Each grinding wheel purchased should be equipped with a blotted fastener to each side of the wheel. Blotters must always be used between the wheel and the inner and outer clamp washers. Contact surfaces of wheels, blotters and washers must be clean and flat.

4. Always use the exact type of clamp washers that are supplied with your tool. Never substitute flat or odd sized washers. Replace them in the exact order and position shown in Figure 4. Always place hollow sides of washers against wheel.

5. Only tighten arbor nut sufficiently to drive the wheel without slippage. Do not over tighten.

6. Be sure to replace end covers (see Figure 5), push cover toward wheel (arrow), and replace screws.

7. After installing replacement wheel, put on safety goggles and stand to the side of the grinder, turn switch "ON" and allow wheel to revolve freely for one minute before beginning to grind.



8. If a new wheel has excess vibration, loosen nut and rotate wheel about 1/2 turn on shaft. Retighten nut.

EXTENSION CORD

When using this tool at a considerable distance from power source, a 3-conductor, grounding type extension cord of adequate size must be used for safety, and to prevent loss of power and overheating. For a 120 volt tool, the minimum size of the wire in any extension cord up to 75 feet long must be 18 gauge (American Wire Gauge), if the total extension cord length is from 75 to 100 feet, 16 gauge wire is required throughout the extension.

OPERATION INSTRUCTIONS

When you face the bench grinder, the wheel on your left is a grinding wheel. This wheel is used for metal grinding and sharpening operations. The wheel to your right is a sanding/polishing wheel. This wheel is used for sanding wood and plastic, removing paint and rust, polishing metal, honing cutting tools, smoothing rough edges on glass, sheet metal, etc.

To operate the bench grinder, put of safety glasses or other eye protection and hold the work firmly. Rest the work on the tool rest and feed it slowly into the wheel at the desired grinding angle. Treat the wheel with respect, never jam work into the wheel or use unnecessary pressure.

Grind only on the face of the grinding wheel, unless you have special wheels specifically made to permit grinding on the side of the wheel. Some bench grinders are equipped with two grinding wheels.

SWITCH

The switch is located on the face of the housing under the nameplate. When you stand in front of the grinder, pulling the button toward you turns the motor "ON", pushing the button away from you (toward the back of the grinder), turns the motor "OFF".

LUBRICATION

Our bench grinders has an all ball-bearing construction, lubricated for life. Reinforced resinoid-grinding wheels. Balanced motor and wheels. Has centrifugal starting switch for longer motor life. Safety push-pull switch and 3-conductor cord. Motor designed and safety cover permit greater grinding clearance for odd shaped objects. Contains adjustable, shatterproof eye shields, adjustable tool rests, adjustable spark deflectors and large capacity dust exhaust for better airflow.

GROUNDING

This tool should be grounded while in use to protect the operator from electric shock.

CORD CONNECTION — This tool should be grounded while in use to protect the operator from electric shock. The tool is equipped with an approved three-conductor cord and three-prong grounding type plug to fit the proper grounding type receptacle. The green (or green and yellow) conductor in the cord is the grounding wire. Never connect the green (or green and yellow) wire to a live terminal.

WIRE BRUSHING INSTRUCTIONS

Wire brushing quickly removes rust, scale or old paint. **ALWAYS** wear safety glasses or other eye protection when using wire wheels as pieces of wire may break off and be thrown from the rotating brush. Handle wire wheel brushes carefully with gloves or rags to avoid puncturing the skin.

BUFFING INSTRUCTIONS

Use cotton buffing wheels, normally with stick-buffing compound applied to the face of the wheel (usually about 5/8" wide). Wear safety goggles for protection against particles of compound thrown off by the wheel. Remove the tool rest if it interferes with the buffing operation. Hold work firmly. Do not jam work into the wheel.